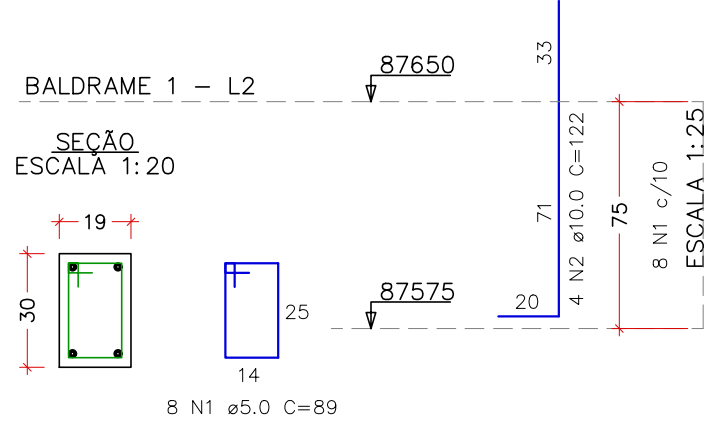
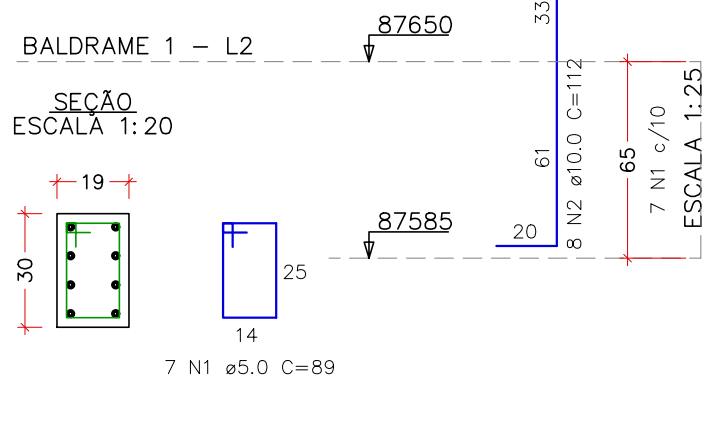


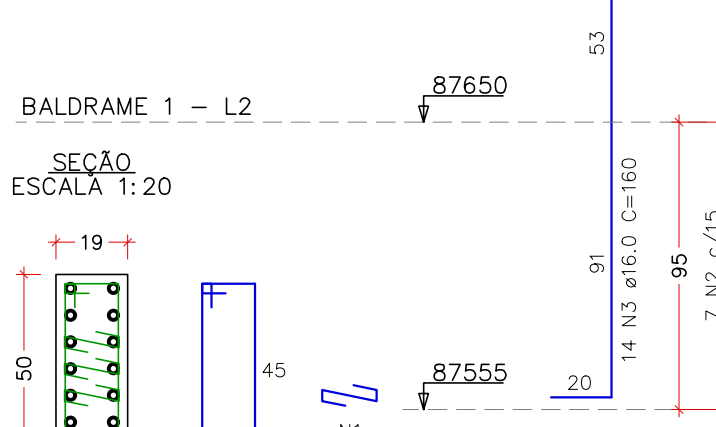
P26=P51=P56=P58=P85=P86



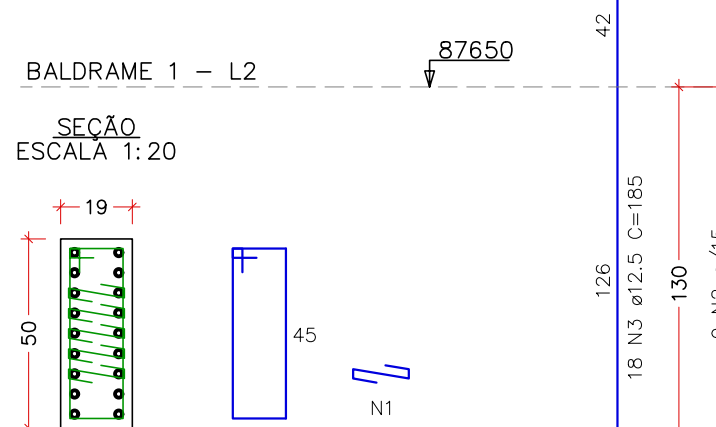
P27



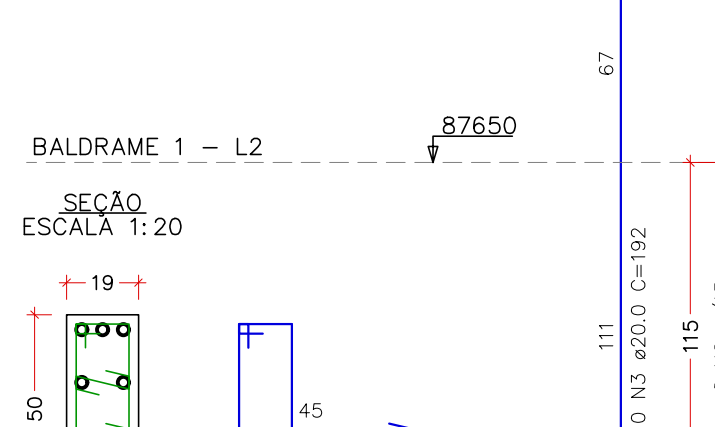
P31



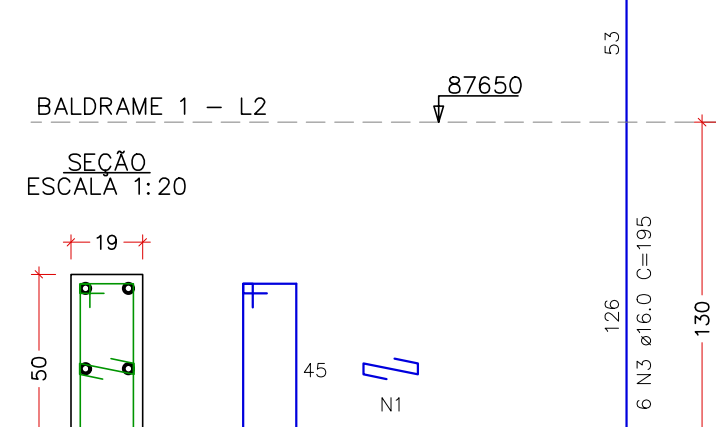
P32



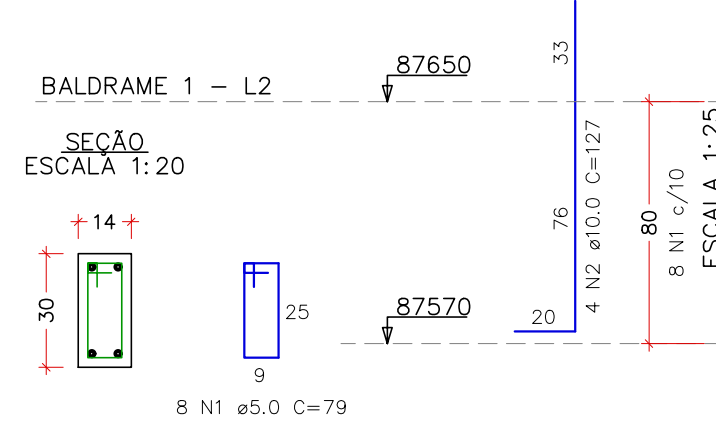
P33



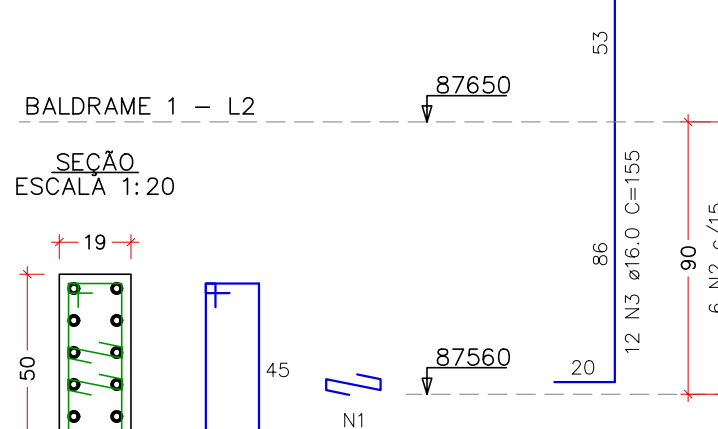
P34



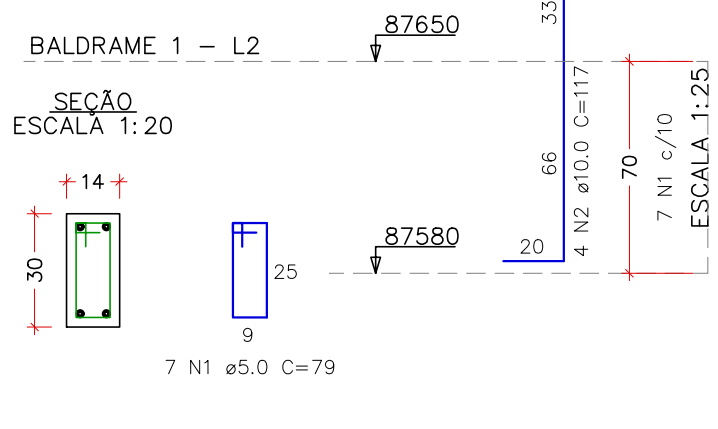
P35=P39=P42=P46



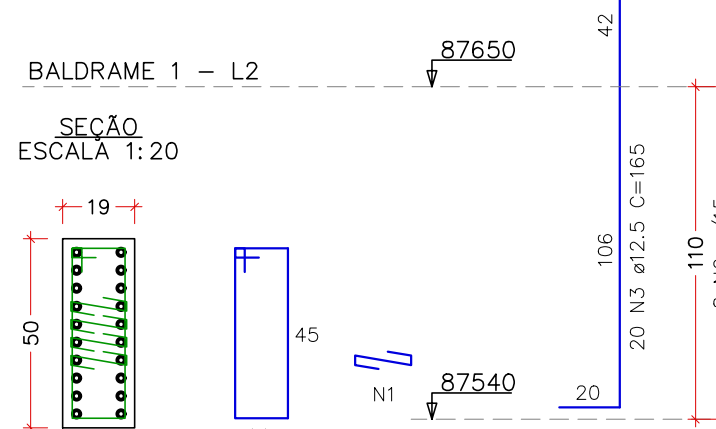
P36



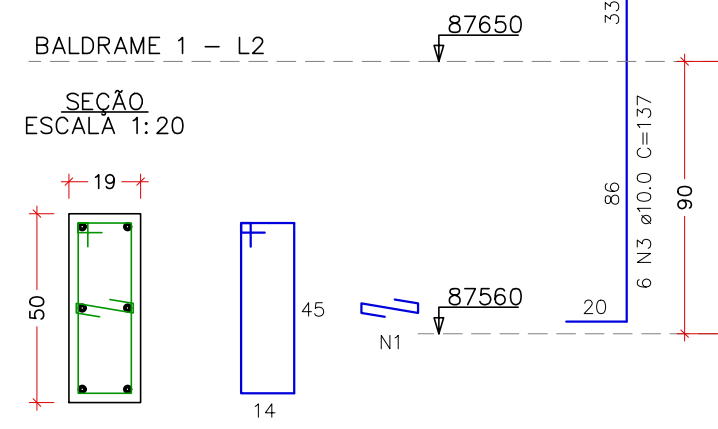
P41



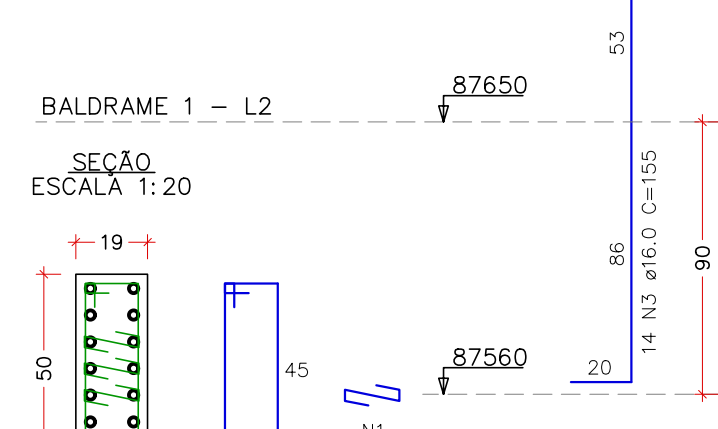
P44



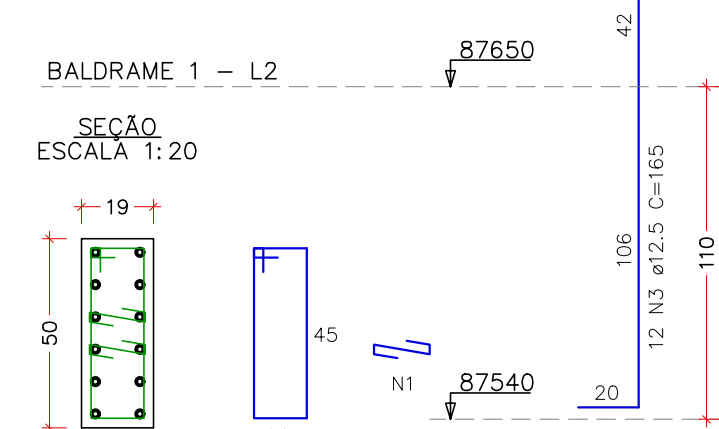
P45



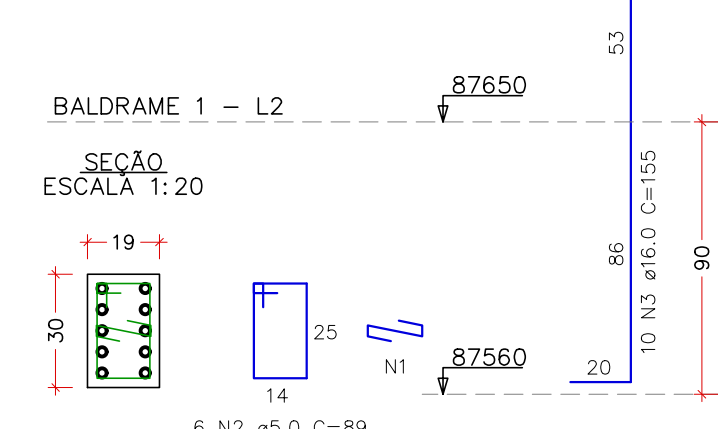
P47



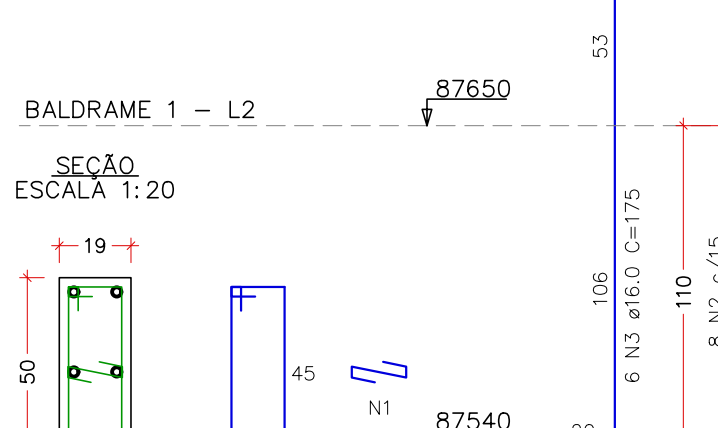
P48



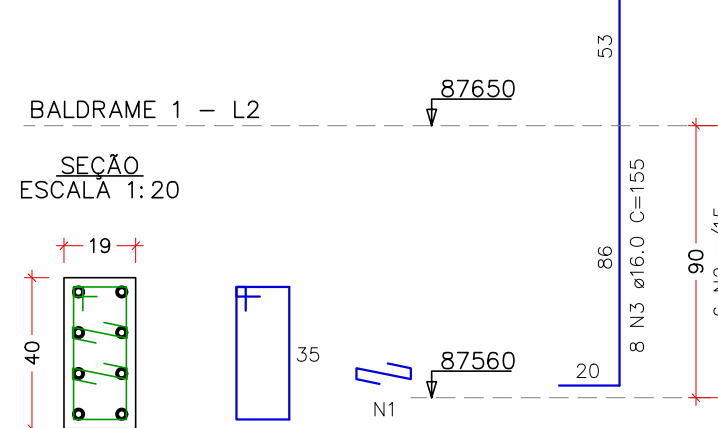
P49



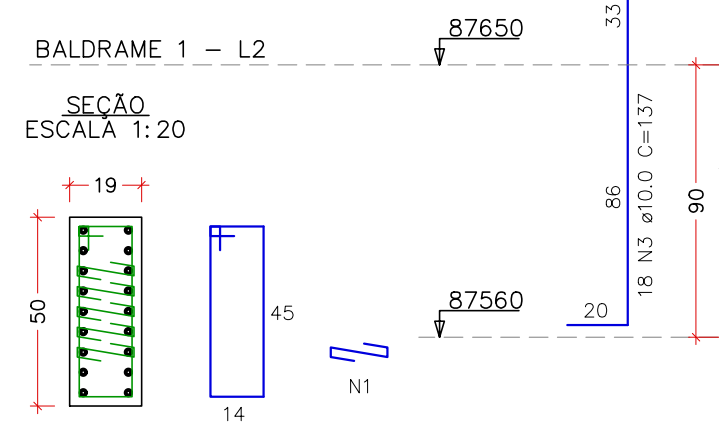
P50



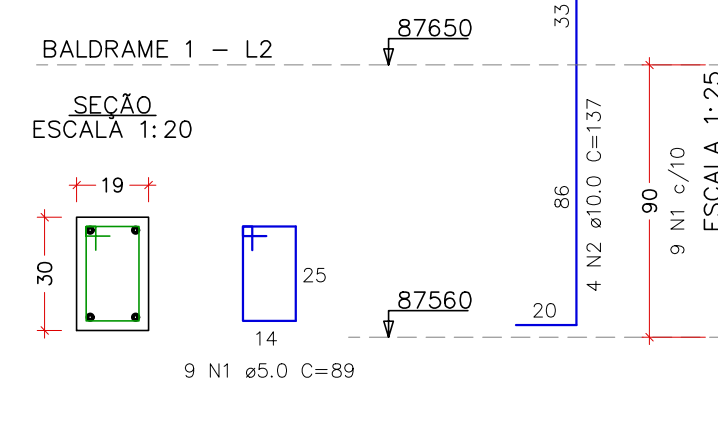
P52



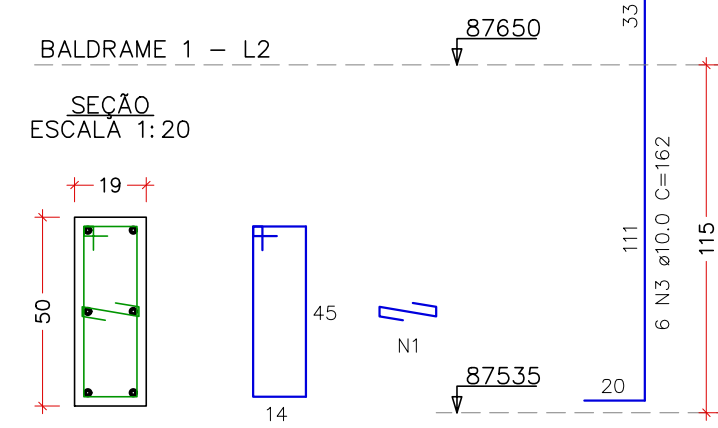
P53



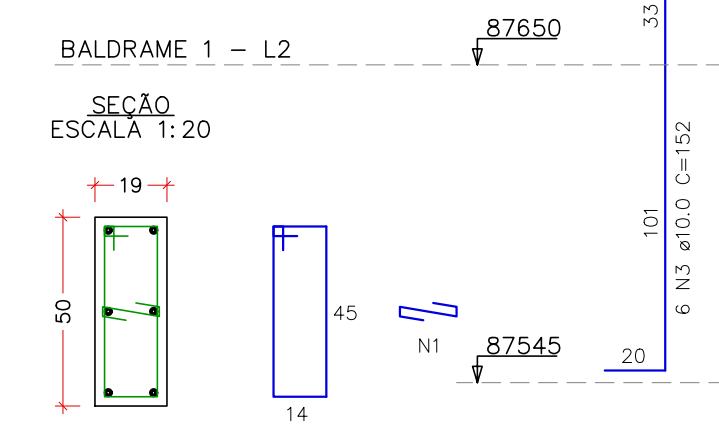
P54



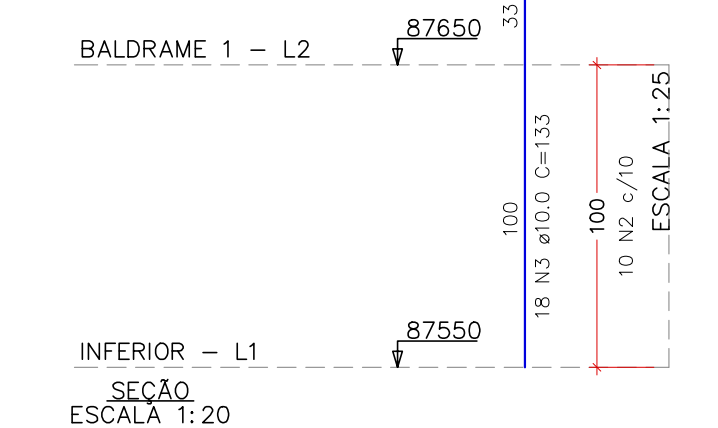
P55



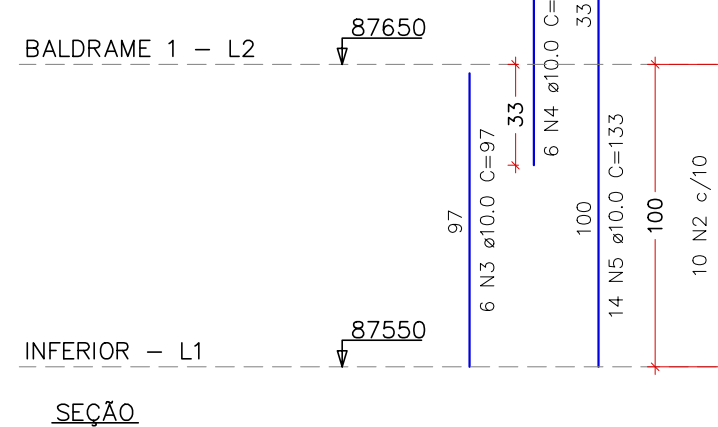
P57



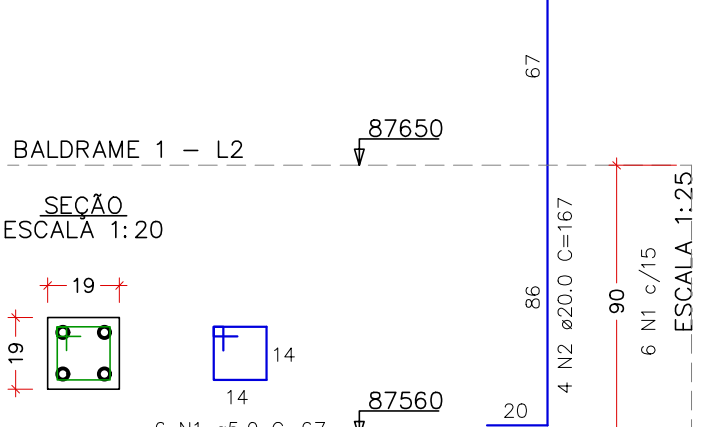
P59



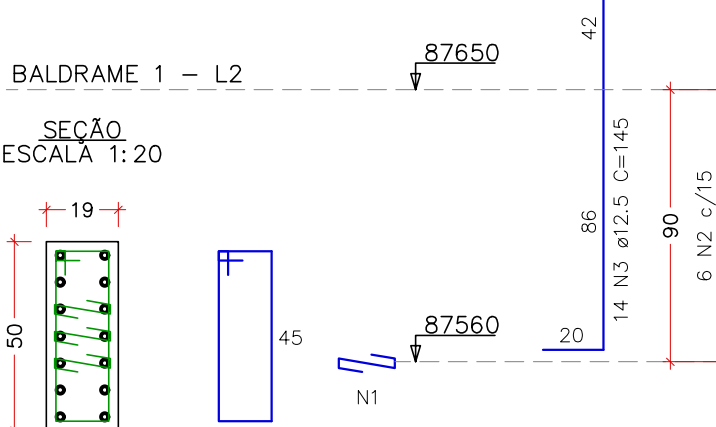
P60



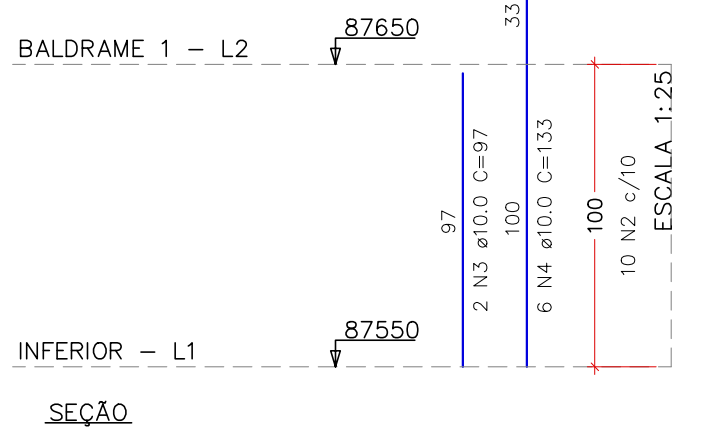
P61



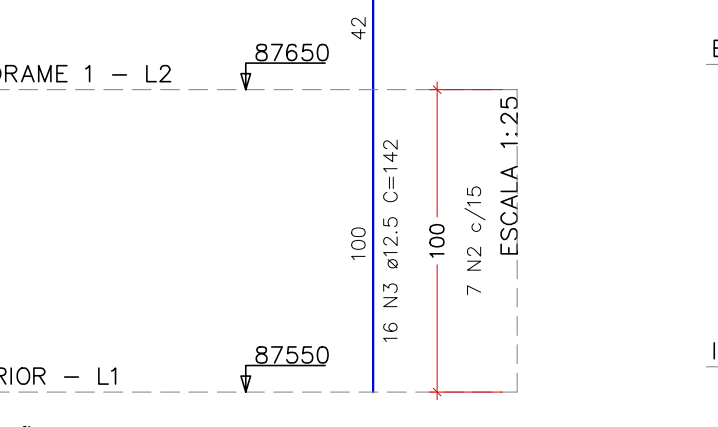
P62



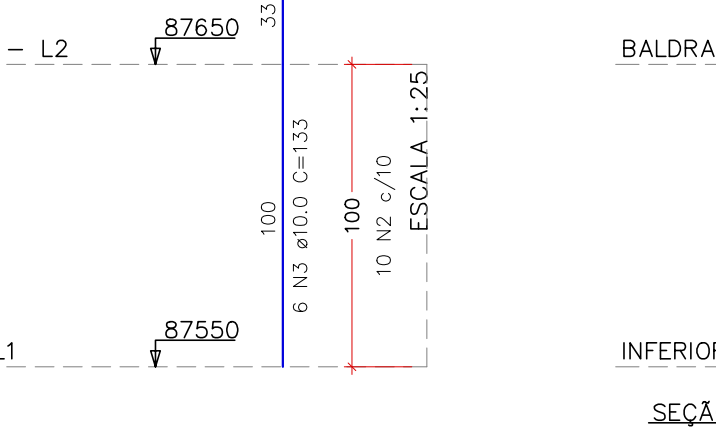
P63



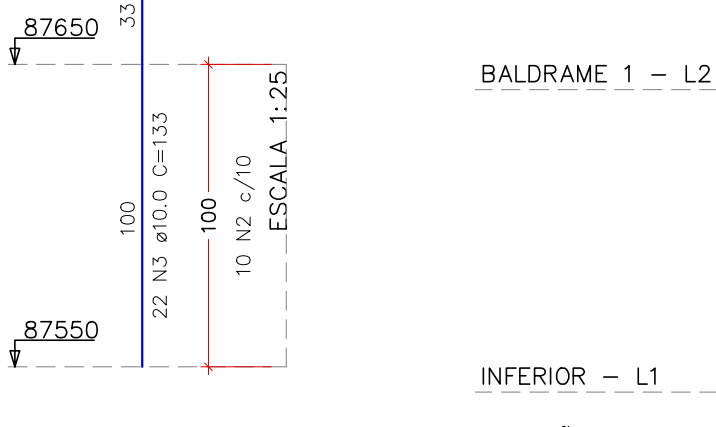
P64



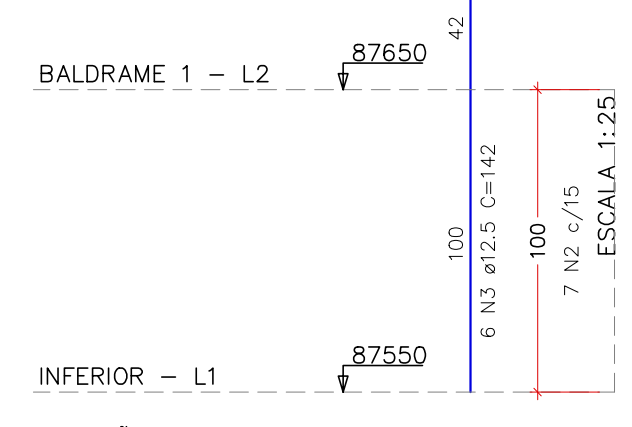
P65



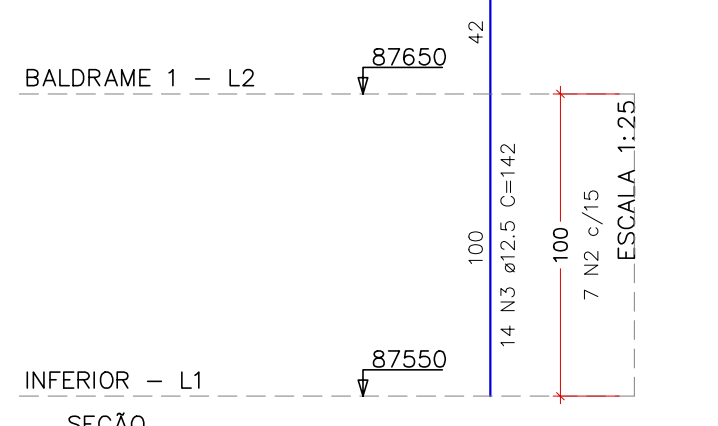
P66



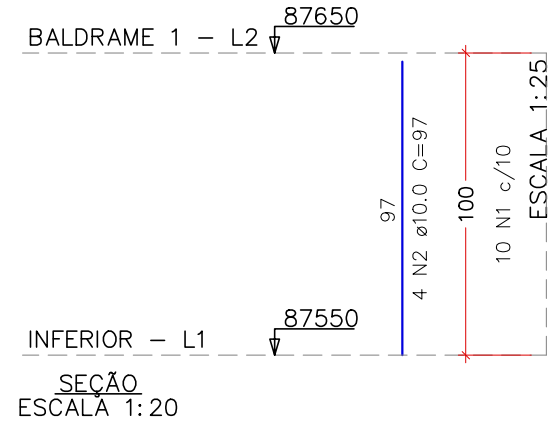
P67=P68



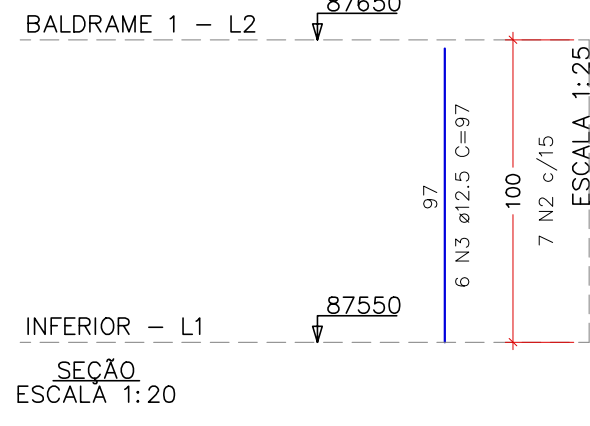
P69



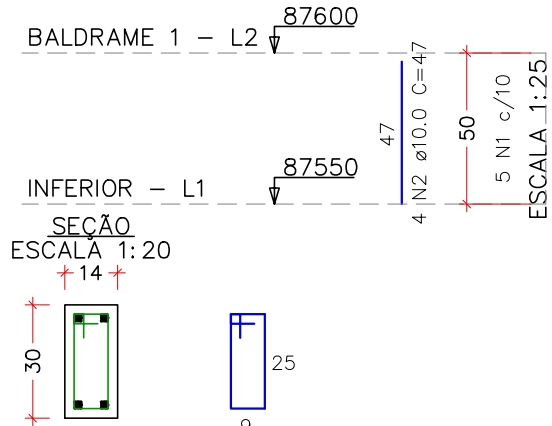
P70=P72=P73



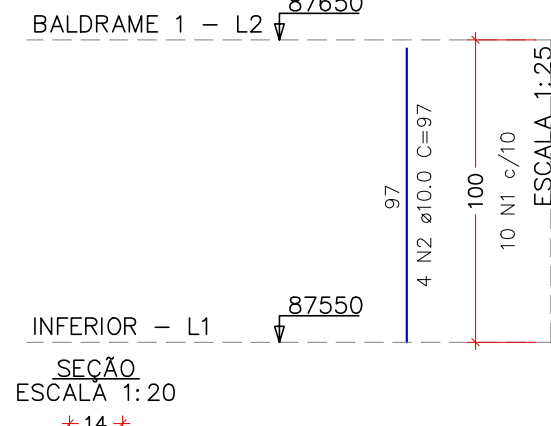
P71



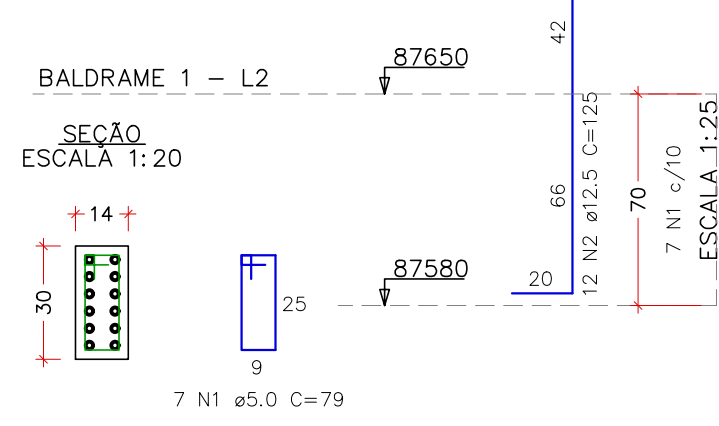
P74=P75=P79=P80



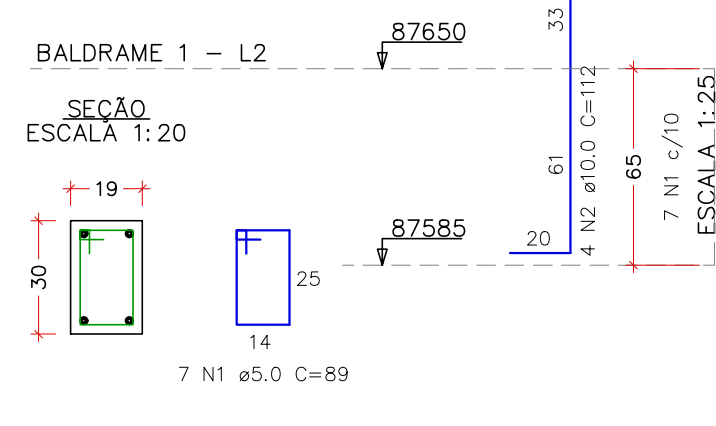
P77=P78



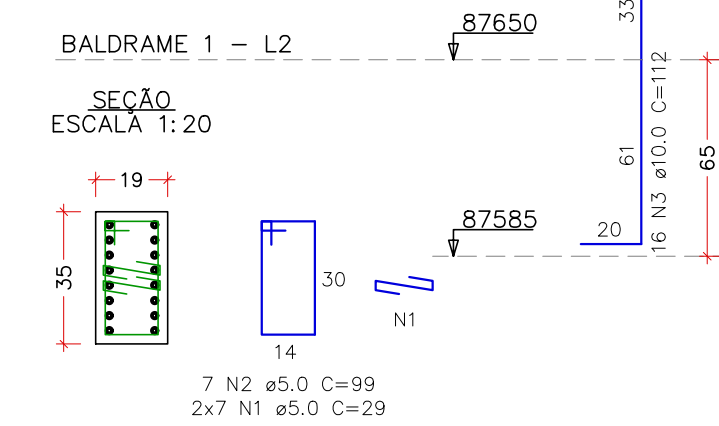
P82



P83



P84



RELAÇÃO DO AÇO – PAV. BALDRAME 1									
ELEMENTO	AÇO	N	DIAM (mm)	QUANT	C.UNIT (cm)	C.TOTAL (cm)	PESO (kg)	C.TOTAL (kg)	C.TOTAL (kg)
6xP26	CA50	1	5.0	48	89	4272	2928	2928	2928
P27	CA50	2	10.0	24	122	2928	89	89	89
P31	CA50	1	5.0	7	89	623	89	89	89
P32	CA50	2	10.0	24	122	2928	89	89	89
P33	CA50	1	5.0	21	29	609	89	89	89
P34	CA50	1	5.0	14	129	1805	89	89	89
P35	CA50	2	10.0	45	29	1305	89	89	89
P36	CA50	1	5.0	16	129	2032	89	89	89
P37	CA50	2	10.0	45	29	1305	89	89	89
P38	CA50	1	5.0	16	129	2032	89	89	89
P39	CA50	2	10.0	45	29	1305	89	89	89
P40	CA50	1	5.0	16	129	2032	89	89	89
P41	CA50	2	10.0	45	29	1305	89	89	89
P42	CA50	1	5.0	16	129	2032	89	89	89
P43	CA50	2	10.0	45	29	1305	89	89	89
P44	CA50	1	5.0	16	129	2032	89	89	89
P45	CA50	2	10.0	45	29	1305	89	89	89
P46	CA50	1	5.0	16	129	2032	89	89	89
P47	CA50	2	10.0	45	29	1305	89	89	89
P48	CA50	1	5.0	16	129	2032	89	89	89
P49	CA50	2	10.0	45	29	1305	89	89	89
P50	CA50	1	5.0	16	129	2032	89	89	89
P51	CA50	2	10.0	45	29	1305	89	89	89
P52	CA50	1	5.0	16	129	2032	89	89	89
P53	CA50	2	10.0	45	29	1305	89	89	89
P54	CA50	1	5.0	16	129	2032	89	89	89
P55	CA50	2	10.0	45	29	1305	89	89	89
P56	CA50	1	5.0	16	129	2032	89	89	89
P57	CA50	2	10.0	45	29	1305	89	89	89
P58	CA50	1	5.0	16	129	2032	89	89	89
P59	CA50	2	10.0	45	29	1305	89	89	89
P60	CA50	1	5.0	16	129	2032	89	89	89
P61	CA50	2	10.0	45	29	1305	89	89	89
P62	CA50	1	5.0	16	129	2032	89	89	89
P63	CA50	2	10.0	45	29	1305	89	89	89
P64	CA50	1	5.0	16	129	2032	89	89	89
P65	CA50	2	10.0	45	29	1305	89	89	89
P66	CA50	1	5.0	16	129	2032	89	89	89
P67	CA50	2	10.0	45	29	1305	89	89	89
P68	CA50	1	5.0	16	129	2032	89	89	89
P69	CA50	2	10.0	45	29	1305	89	89	89
P70	CA50	1	5.0	16	129	2032	89	89	89
P71	CA50	2	10.0	45	29	1305	89	89	89
P72	CA50	1	5.0	16	129	2032	89	89	89
P73	CA50	2	10.0	45	29	1305	89	89	89
P74	CA50	1	5.0	16	129	2032	89	89	89
P75	CA50	2	10.0	45	29	1305	89	89	89
P76	CA50	1	5.0	16	129	2032	89	89	89
P77	CA50	2	10.0	45	29	1305	89	89	89
P78	CA50	1	5.0	16	129	2032	89	89	89
P79	CA50	2	10.0	45	29	1305	89	89	89
P80	CA50	1	5.0	16	129	2032	89	89	89
P81	CA50	2	10.0	45	29	1305	89	89	89
P82	CA50	1	5.0	16	129	2032	89	89	89
P83	CA50	2	10.0	45	29	1305	89	89	89
P84	CA50	1	5.0	16	129	2032	89	89	89

RESUMO DO AÇO			
AÇO	DIAM (mm)	C.TOTAL (m)	PESO (kg)
CA50	10.0	269.3	182.7
CA50	12.5	186.9	198
CA50	16.0	119.8	195.8
CA50	20.0	25.9	70.2
CA50	5.0	610.6	103.5
PESO TOTAL (kg)			
CA50	646.7		
CA50	103.5		
VOLUME DE CONCRETO (C=30) = 2.27 m³			
ÁREA DE FORMA = 35.41 m²			

REV. 03	31/03/25	REVISÃO DE PROJETO CONFORME ANÁLISE SOLICITADA	DAC
REV. 02	24/02/25	REVISÃO DE PROJETO CONFORME ANÁLISE SOLICITADA	DAC
REV. 01	30/10/24	REVISÃO DE PROJETO COMPLETO	DAC
REV. 00	02/02/24	EMIÇÃO INICIAL	DAC
REVISÃO DATA : DESCRIÇÃO:			RESP.:
CLIENTE			
PROJETO			
COORDENAÇÃO			
ALCANTARA FERREIRA CREA: MG-97.132/D			
RESPONSÁVEL TÉCNICO E AUTOR			
RAFAEL BARBOSA CARREIRA CAU: 004155411-5			
EMPENHAMENTO			
CONSTRUÇÃO DA ESCOLA MUNICIPAL ALEGRINHO			
DISCIPLINA			ESTRUTURAL
FASE DO PROJETO			EXECUTIVO
FOLHA Nº			18/53
PROJETO ESTRUTURAL EM CONCRETO ARMADO			
DETALHAMENTOS			
PILARES DO PAV. BALDRAME 1			
DATA INICIAL			
02/02/2024			
INDICADA			
RO3			